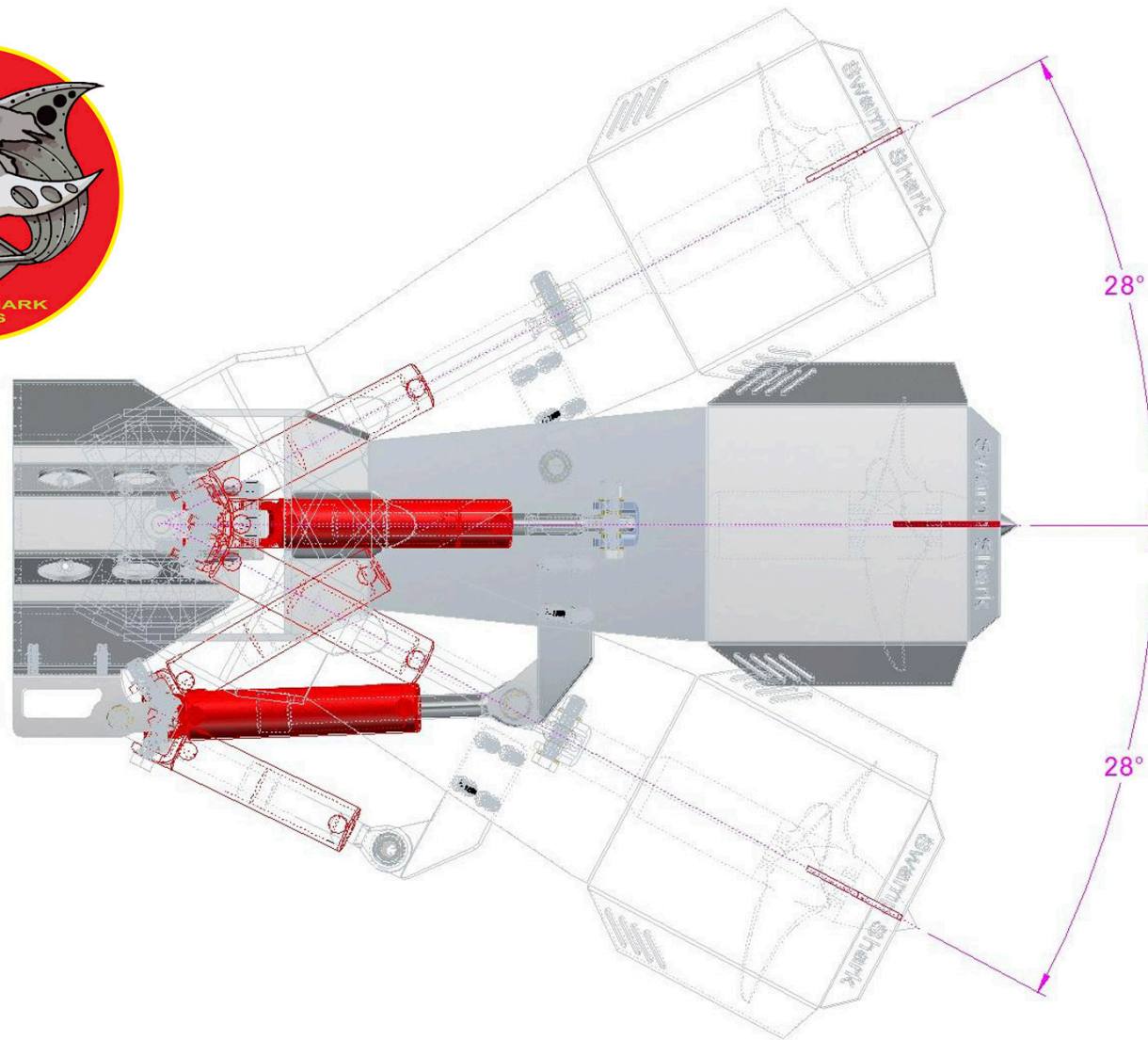




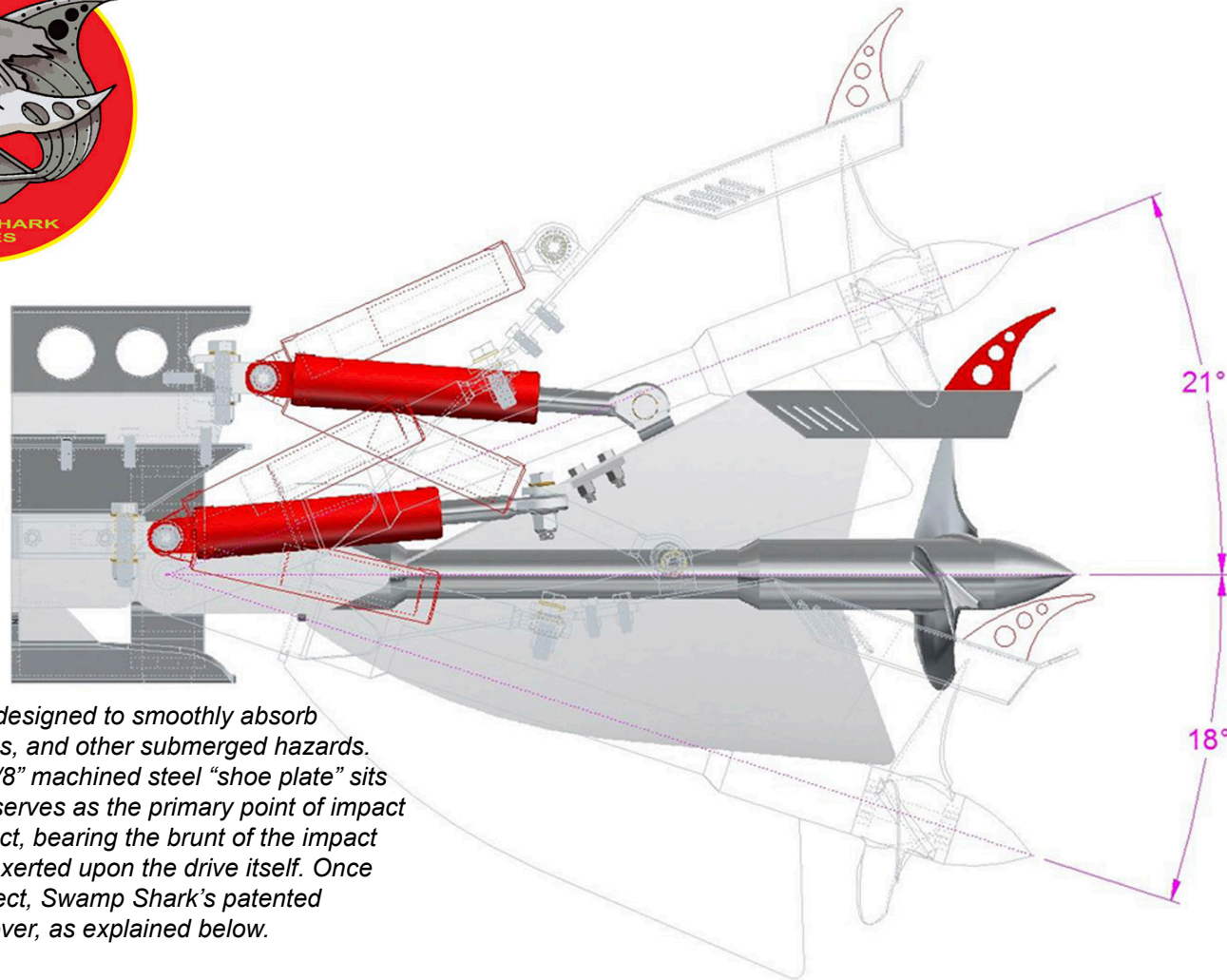
SWAMP SHARK
HAS ARRIVED



It's Here. Perhaps the most talked-about marine technology to hit the market in years, **Swamp Shark** has been designed to address the many weaknesses of other propulsion types. Developed and extensively tested in the unforgiving swamps of South Louisiana, Swamp Shark is a high performance propulsion system offering boaters the highest levels of handling and control across a wide range of conditions. A Swamp Shark drive offers many advantages that conventional systems cannot. Metal Shark, a leading designer and manufacturer of welded aluminum boats for military, law enforcement, and commercial operators, is pleased to now offer Swamp Shark technology to recreational customers, too. On the following pages you'll learn more about our rugged, go-anywhere, do-anything, military-tough Gravois 21 and 24 shallow-water boats powered by Swamp Shark.



Swamp Shark Dwells at the Top of the Shallow Water Food Chain. There are lots of little mud boats out there with puny engines on them, struggling along at putt-putt speeds. Swamp Shark leaves them all in its wake. **Swamp Shark handles up to 550 fire-breathing horsepower and a whopping 1,250 Ft.-Lbs. of torque** so it's capable of pushing a *real* boat - big enough for you, your friends, and all your gear - into even the most hostile terrain. Other options do not compare. Airboats offer high power but are meant to run in a straight line. Water jets require large water inlets that often clog, and outboards do, too. Other options have vulnerable appendages like rudders that snag in vegetation, or are so underpowered that they can't get out of their own way. Swamp Shark offers the acceleration, speed, and handling of a propeller-driven vessel, it accommodates high power and torque loads, and travels in forward and reverse with equal proficiency. In short, *Swamp Shark is the most durable and reliable shallow water propulsion system available.*



Swamp Shark has been designed to smoothly absorb impacts from logs, stumps, and other submerged hazards. A heavy duty gusseted 3/8" machined steel "shoe plate" sits forward of the drive and serves as the primary point of impact with any submerged object, bearing the brunt of the impact and lessening the force exerted upon the drive itself. Once the drive impacts the object, Swamp Shark's patented Rebound System takes over, as explained below.

Swamp Shark's Patented Rebound System: The Ultimate in Impact Protection. The Swamp Shark propulsion system consists of several key components: A CNC-cut, machined-steel surface drive; internal/external hydraulic Rebound System; and a specialized internal cooling system, all of completely original design. The patented Rebound System, which consists of actuators inside and outside of the vessel, allows the Swamp Shark drive to smoothly and automatically adapt to conditions. When the drive impacts a solid object, such as a log, stump, or other submerged hazard, it swiftly and smoothly "kicks up" so that the propeller will not be impacted (the leading edge of the skeg has been radiused to facilitate quick and smooth passage over any objects it encounters). The Rebound System then exerts reverse pressure to instantaneously return the drive to its normal trim position as soon as the object has been cleared.



Go Anywhere, Thanks to Swamp Shark's Fully Self-Contained Onboard Cooling System. Swamp Shark features a fully self-contained, patent-pending, onboard keel cooling system, with no appendages beneath the hull, to enable smooth and reliable operation over underwater obstacles. Since there is no need for outside water, a Swamp Shark-propelled vessel can traverse shallow, vegetation-clogged water or even loose mud with no cooling issues. This highly-efficient system cools engine oil, power steering and transmission fluid, and also boost-air intercoolers for turbo or supercharged engines, all with no reliance on outside water.



METAL SHARK
METALSHARKBOATS.COM

21 SWAMP SHARK



Metal Shark 21' Swamp Shark: Here's the mud-slinging, tree-eating shallow water high performance boat that even your mom is talking about. Viewed and shared by millions of people the very week of its debut, this rugged machine is like nothing else on (or near) the water. With over 500 boats built within the past three years for demanding customers like the US Army, Navy, Air Force and Coast Guard, Metal Shark possesses unsurpassed expertise in the design and construction of durable, military-grade, welded aluminum boats. The 21 Swamp Shark is available with gas or diesel power and a wide range of custom equipment including LED flood lights, bow hunting lights, rod lockers, coolers, and more. Are you ready to move up to a true high performance shallow water machine? Contact us today to begin the process of building your own Metal Shark powered by Swamp Shark, coming soon to a swamp near you.



21 Gravois Swamp Shark - Specifications

LOA:	21"
Beam:	7' 6"
Fuel Capacity:	50 Gallons
Draft (hull):	10"
Dry Weight:	2,750 Lbs

Power Options (with Swamp Shark Drive):

L83 5.3L V8 (365 HP)
Hyundai Diesel V6 (270 HP)

Major Standard Features (Boat)

- 5-Year Structural Hull Warranty
- 12V Accessory Plug (In-Dash)
- Anchor Locker w/ Hatch
- Anodes, Zinc
- Battery Switch
- Battery Trays
- Batteries (2), Optima Blue Top
- Bilge Pump, 2000 GPH w/ Auto & Manual Switches
- Casting Deck, Fwd w/ Integrated Latching Storage Hatch
- Center Console, Welded Aluminum
- Cleats: Heavy Duty Welded Aluminum

Major Standard Features, Continued:

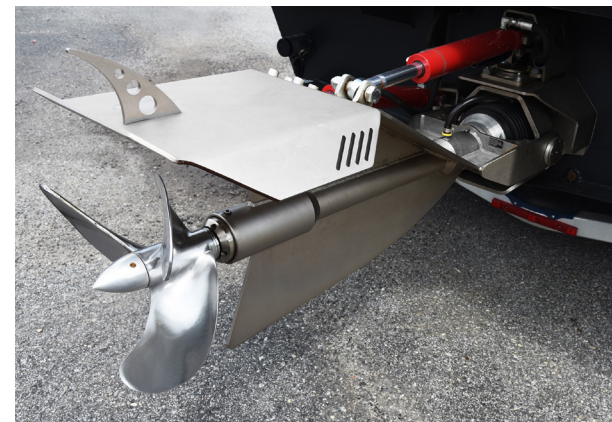
- Cockpit: Self-Bailing w/ Integrated Scupper System
- Compass
- Construction: Mil-Spec Quality. 100% Digitally Designed and Fully Welded, using CNC-Cut, Military Grade 5086 Aluminum
- Cushion Package
- Drink Holders, Stainless Steel
- Engine Hatch, Aluminum. Optimized for Maximum Air Flow
- Finish: Full Paint, Single Color (Customer Choice of Color) w/ Painted Non-Skid Decks & Gunnels
- Fuel Tank, Aluminum, w/ Vented Fuel Fill
- Grab Handles, Welded Aluminum
- Hatches, w/ Gaskets, Latching
- Horn, Electric
- Hull, Military-Proven Shallow Water Hull Design
- Instrumentation, Full Digital
- Lighting: LED Navigation Lights
- Seating, Helm Leaning Post w/ Aluminum Frame & Cooler
- Steering, Hydraulic, Full
- Steering Wheel, Edson Stainless Steel
- Switch Panel in Dash
- Switches & Breakers, Weather Resistant
- Trim Tabs, Electric w/ Indicators
- Wiring: Military Grade

Optional Equipment

- Battery Charger
- Cooler, Yeti 65, Removable
- Dive Ladder, Removable
- Light Bar, Removable, w/ Hi-Intensity LED Spotlights
- Lighting, Bow Fishing Lights, LED
- Lighting, Cockpit LED
- Livewell
- Mil-Finish Interior/Exterior Aluminum (Deletes Paint)
- Paint, Custom
- Power Pole Anchoring System
- Rod Locker, Locking
- Stereo: AM/FM/MP3 w/ Bluetooth & Aux Connection Plus (4) Speakers
- Trolling Motor, Electric
- Trailer, w/ Tie-Downs

Swamp Shark Drive - Key Features:

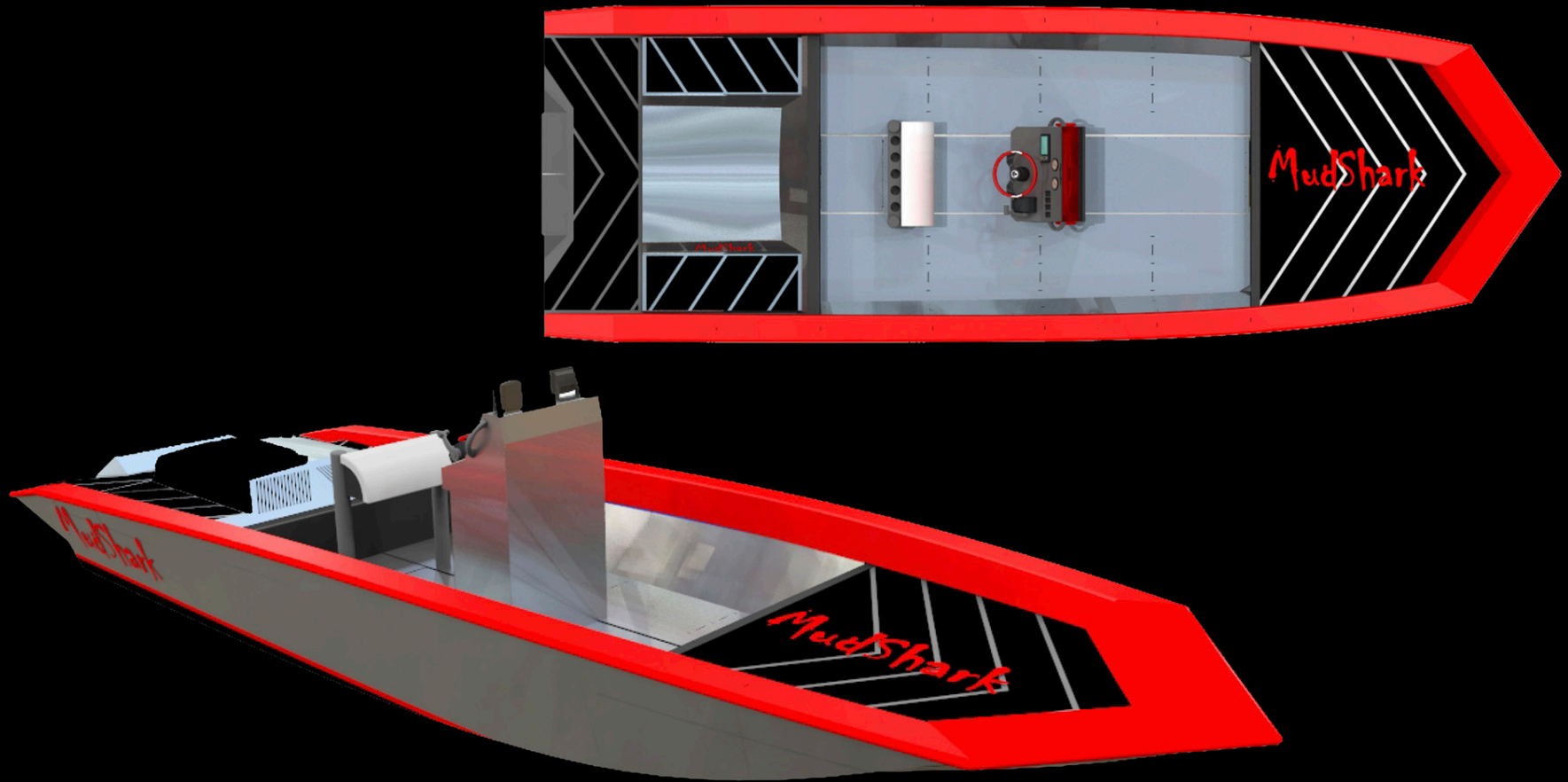
- CNC-cut, machined steel, trimmable **surface drive** with custom three-blade **stainless steel prop** and **full hydraulic steering**. Accommodates high horsepower and torque and allows for better steering and control.
- Swamp Shark performs capably in reverse, allowing vessel to back up quickly and with full control.
- Patented **hydraulic / electric rebound system** consists of actuators inside and outside of the vessel. Allows the drive to smoothly and automatically adapt to conditions. When the drive impacts a solid object, such as a log, stump, or other submerged hazard, it swiftly "kicks up" so that the propeller will not be impacted. The system then exerts reverse pressure to instantaneously return the drive to its normal trim position as soon as the object has been cleared.
- Patent-pending, onboard **keel cooling system**. With no vulnerable appendages beneath the hull and no need for overboard raw water, the keel cooling system allows for smooth operation over underwater obstacles and allows a Swamp Shark-propelled vessel to traverse shallow, vegetation-clogged water or even loose mud with no cooling issues. The highly-efficient system cools engine oil, power steering and transmission fluid, and also boost-air intercoolers for turbo or supercharged engines, all with no reliance on outside water.



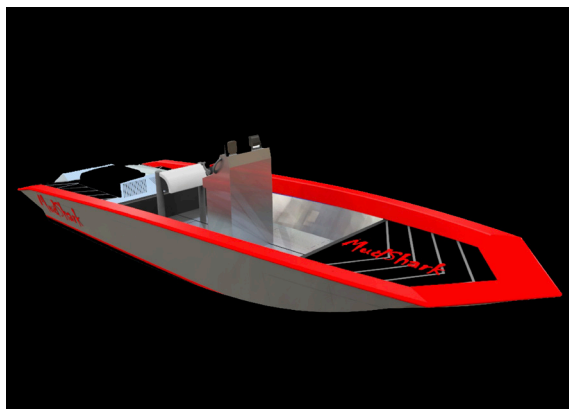


METAL SHARK
METALSHARKBOATS.COM

24 SWAMP SHARK



Metal Shark 24' Swamp Shark: Metal Shark's 24 Swamp Shark represents the extreme high-end of shallow water high performance. In short, there's nothing else like it. 100% Digitally designed, CNC router-cut, welded to perfection from durable plates of military grade 5086 aluminum alloy, and equipped with the radical new Swamp Shark propulsion system, this is the most ferocious beast in the swamp. Tough, rugged, and overbuilt in every way, with gas and diesel power options up to 450 propshaft horsepower, the 24 Swamp Shark is at home virtually anywhere you dare to drive it. Read on to explore the 24 Swamp Shark's lengthy list of standard equipment and available features. Then - if you're ready - contact us to begin the process of building your very own Swamp Shark.



24 Gravois Swamp Shark - Specifications

LOA:	24'
Beam:	8' 5"
Fuel Capacity:	75 Gallons
Draft (hull):	10"
Dry Weight:	3,100 Lbs

Power Options (with Swamp Shark Drive):

- L83 5.3L V8 (365 HP)
- L86 6.2L V8 (430 HP)
- LS3 6.2L V8 (450 HP)
- Duramax Diesel 6.6L V8 (400 HP)

Major Standard Features (Boat)

- 5-Year Structural Hull Warranty
- 12V Accessory Plug (In-Dash)
- Anchor Locker w/ Hatch
- Anodes, Zinc
- Battery Switch
- Battery Trays
- Batteries (2), Optima Blue Top
- Bilge Pump, 2000 GPH w/ Auto & Manual Switches
- Casting Deck, Fwd w/ Integrated Latching Storage Hatch
- Center Console, Welded Aluminum
- Cleats: Heavy Duty Welded Aluminum

Major Standard Features, Continued:

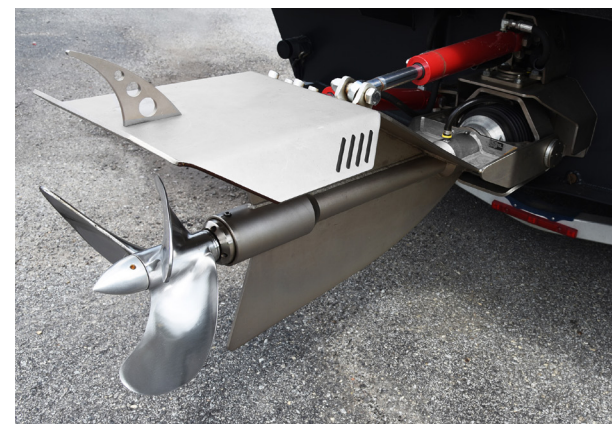
- Cockpit: Self-Bailing w/ Integrated Scupper System
- Compass
- Construction: Mil-Spec Quality. 100% Digitally Designed and Fully Welded, using CNC-Cut, Military Grade 5086 Aluminum
- Cushion Package
- Drink Holders, Stainless Steel
- Engine Hatch, Aluminum. Optimized for Maximum Air Flow
- Finish: Full Paint, Single Color (Customer Choice of Color) w/ Painted Non-Skid Decks & Gunnels
- Fuel Tank, Aluminum, w/ Vented Fuel Fill
- Grab Handles, Welded Aluminum
- Hatches, w/ Gaskets, Latching
- Horn, Electric
- Hull, Military-Proven Shallow Water Hull Design
- Instrumentation, Full Digital
- Lighting: LED Navigation Lights
- Seating, Helm Leaning Post w/ Aluminum Frame & Cooler
- Steering, Hydraulic, Full
- Steering Wheel, Edson Stainless Steel
- Switch Panel in Dash
- Switches & Breakers, Weather Resistant
- Trim Tabs, Electric w/ Indicators
- Wiring: Military Grade

Optional Equipment

- Battery Charger
- Cooler, Yeti 65, Removable
- Dive Ladder, Removable
- Light Bar, Removable, w/ Hi-Intensity LED Spotlights
- Lighting, Bow Fishing Lights, LED
- Lighting, Cockpit LED
- Livewell
- Mil-Finish Interior/Exterior Aluminum (Deletes Paint)
- Paint, Custom
- Power Pole Anchoring System
- Rod Locker, Locking
- Stereo: AM/FM/MP3 w/ Bluetooth & Aux Connection Plus (4) Speakers
- Trolling Motor, Electric
- Trailer, w/ Tie-Downs

Swamp Shark Drive - Key Features:

- CNC-cut, machined steel, trimmable **surface drive** with custom three-blade **stainless steel prop** and **full hydraulic steering**. Accommodates high horsepower and torque and allows for better steering and control.
- Swamp Shark performs capably in reverse, allowing vessel to back up quickly and with full control.
- Patented **hydraulic / electric rebound system** consists of actuators inside and outside of the vessel. Allows the drive to smoothly and automatically adapt to conditions. When the drive impacts a solid object, such as a log, stump, or other submerged hazard, it swiftly "kicks up" so that the propeller will not be impacted. The system then exerts reverse pressure to instantaneously return the drive to its normal trim position as soon as the object has been cleared.
- Patent-pending, onboard **keel cooling system**. With no vulnerable appendages beneath the hull and no need for overboard raw water, the keel cooling system allows for smooth operation over underwater obstacles and allows a Swamp Shark-propelled vessel to traverse shallow, vegetation-clogged water or even loose mud with no cooling issues. The highly-efficient system cools engine oil, power steering and transmission fluid, and also boost-air intercoolers for turbo or supercharged engines, all with no reliance on outside water.





The Strength of a Leader: Metal Shark is no fly-by-night operation. A leading defense contractor and supplier of boats for the U.S. Armed Forces, **Metal Shark has designed, built, and delivered over 500 boats in the past three years alone.** From its two South Louisiana facilities, Metal Shark employs over 375 American workers who produce aluminum and steel vessels up to 250' in length for military, law enforcement, fire rescue, and commercial operators worldwide. Metal Shark possesses not only the knowledge to design and build boats capable of withstanding years of use and abuse, but the company has the strength and the financial backbone to weather the economy. With a multi-year backlog of fleet contracts worth multiple millions of dollars, customers can count on Metal Shark to be there with unmatched warranty service and technical support.

www.metalsarkboats.com



6814 E. Admiral Doyle Drive • Jeanerette, LA 70544 • 337.364.0777 • sales@metalsharkboats.com